

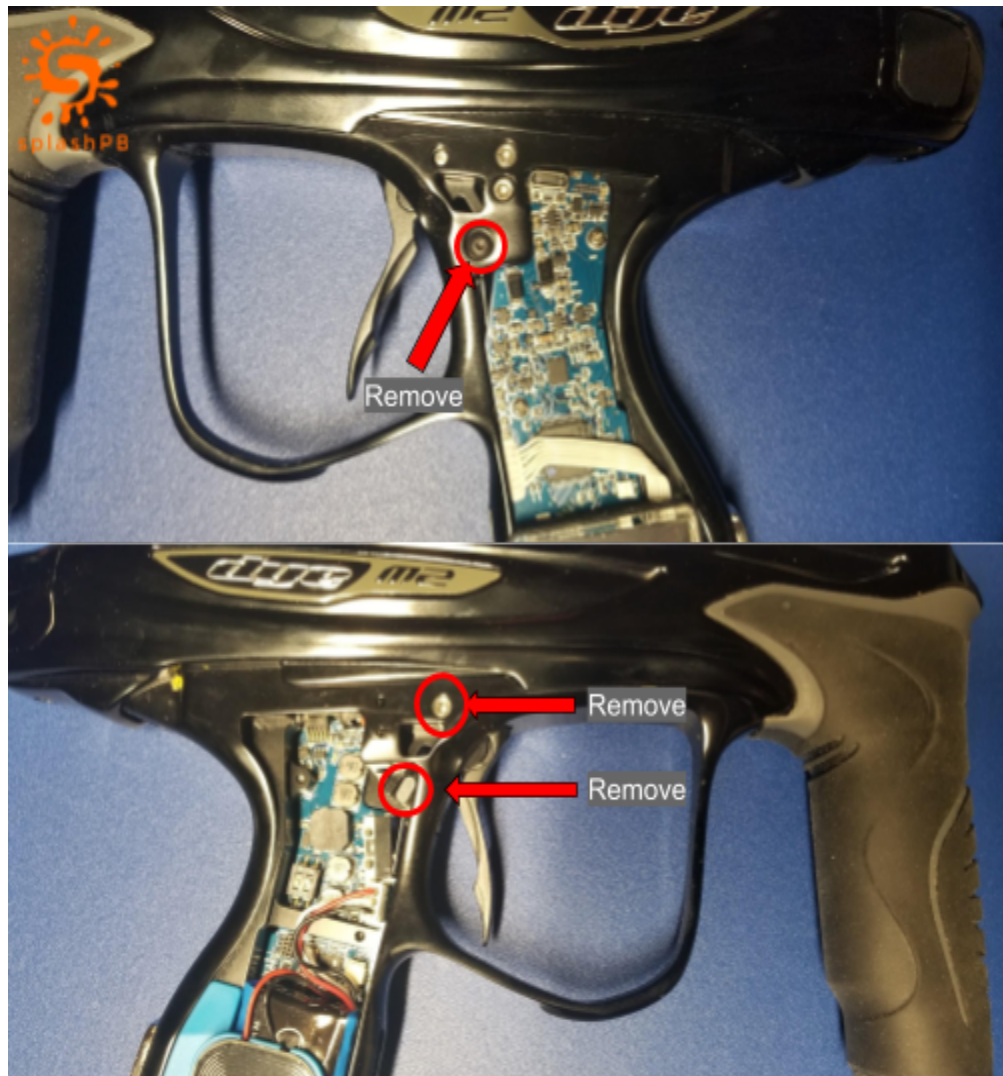
Dye M2/M3s/M3+ Trigger Manual

This Guide will show you the steps to install your new splashPB trigger into the Dye M2/M3s/M3+.

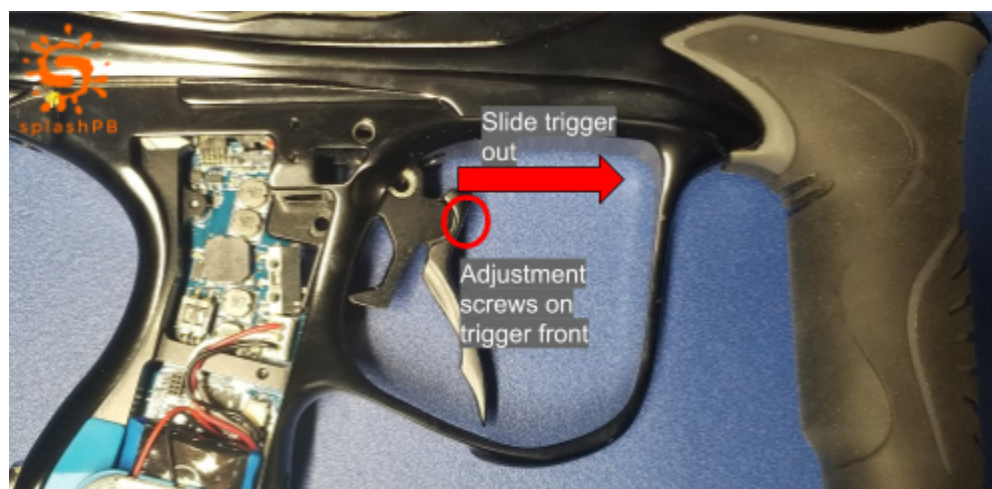
1. Take the grip off by sliding it forward and pushing out towards you.



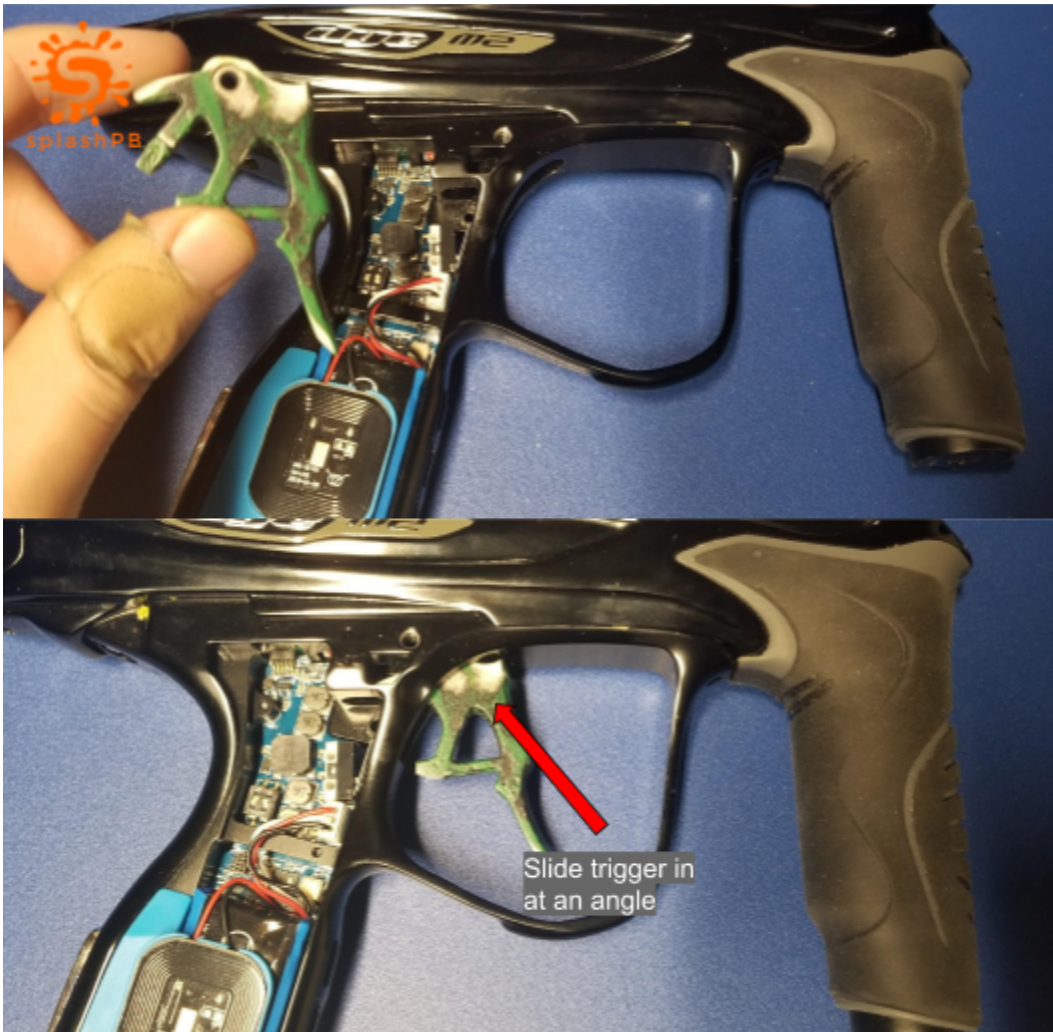
2. Take off these 3 parts: the screw holding in the trigger adjustment magnet, the trigger adjustment that is in between the trigger, the guide screw holding in the bearing.



3. Slide out Trigger. If not coming out easy you may need to loosen adjustment screws for better angle.



4. Get your new trigger and slide it in at an angle so that the top is just slightly in by the bearing. Then push the bottom of the plastic piece of the trigger up and slide it in.



5. Reinstall the guide screw. The magnet adjustment piece is no longer needed and does not need to be installed.



6. Once the trigger is installed and is catching when pressed or not sensitive you may need to rock the trigger left and right a couple times to free it.(one time thing and probably will not be needed)



7. Reinstall the grip and enjoy your custom trigger!



If trigger is not working try adjusting the trigger screws on the side.



Any questions or problems please contact us by email:
Splashpbcustom@gmail.com

Thank you!